



PHYSICAL
ELECTRONICS
A DIVISION OF ULVAC-PHI

TOF-SIMS Data Reduction Software (TOF-DR)

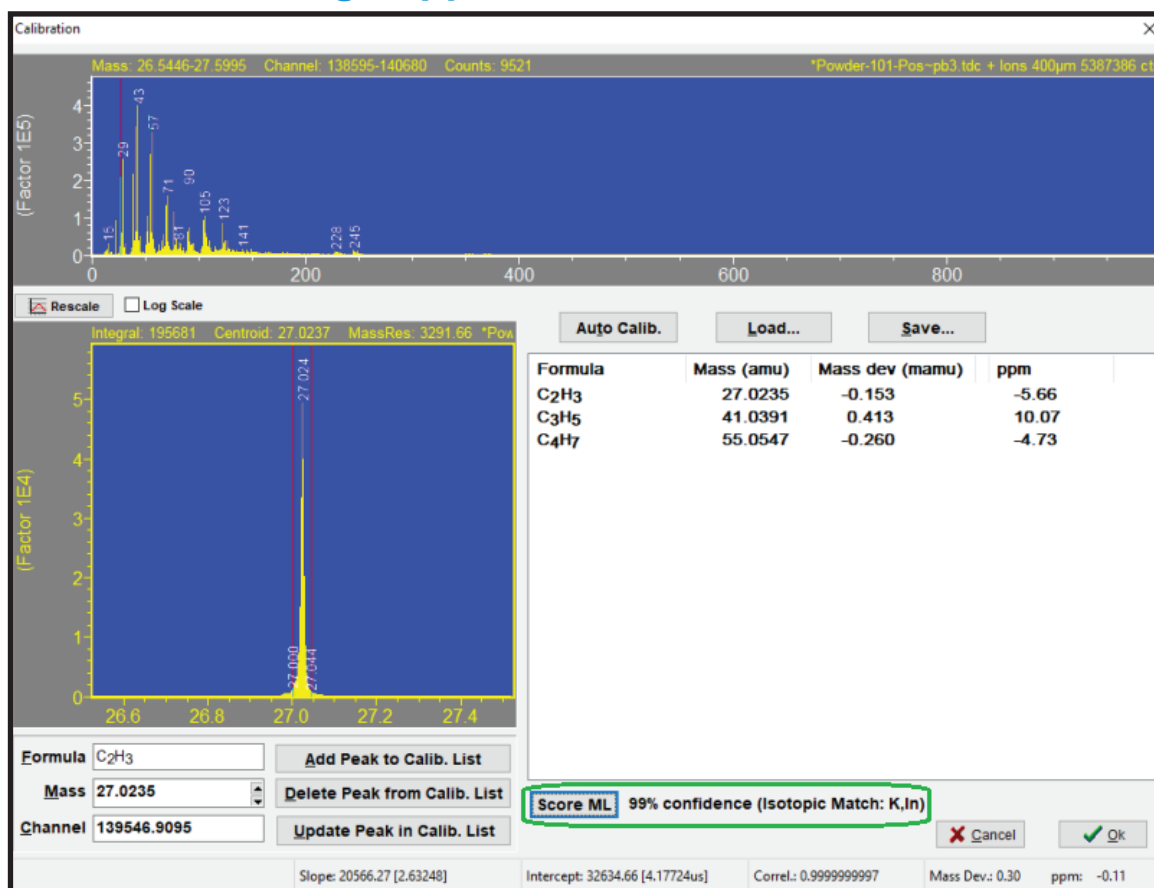
TOF-DR 4.0 is the latest release of PHI's software for the treatment, processing, presentation and reporting of TOF-SIMS tandem MS imaging data.

The new release includes new or improved capabilities including new tools for processing depth profile data, peak identification, and graphical data presentation of three dimensional data.

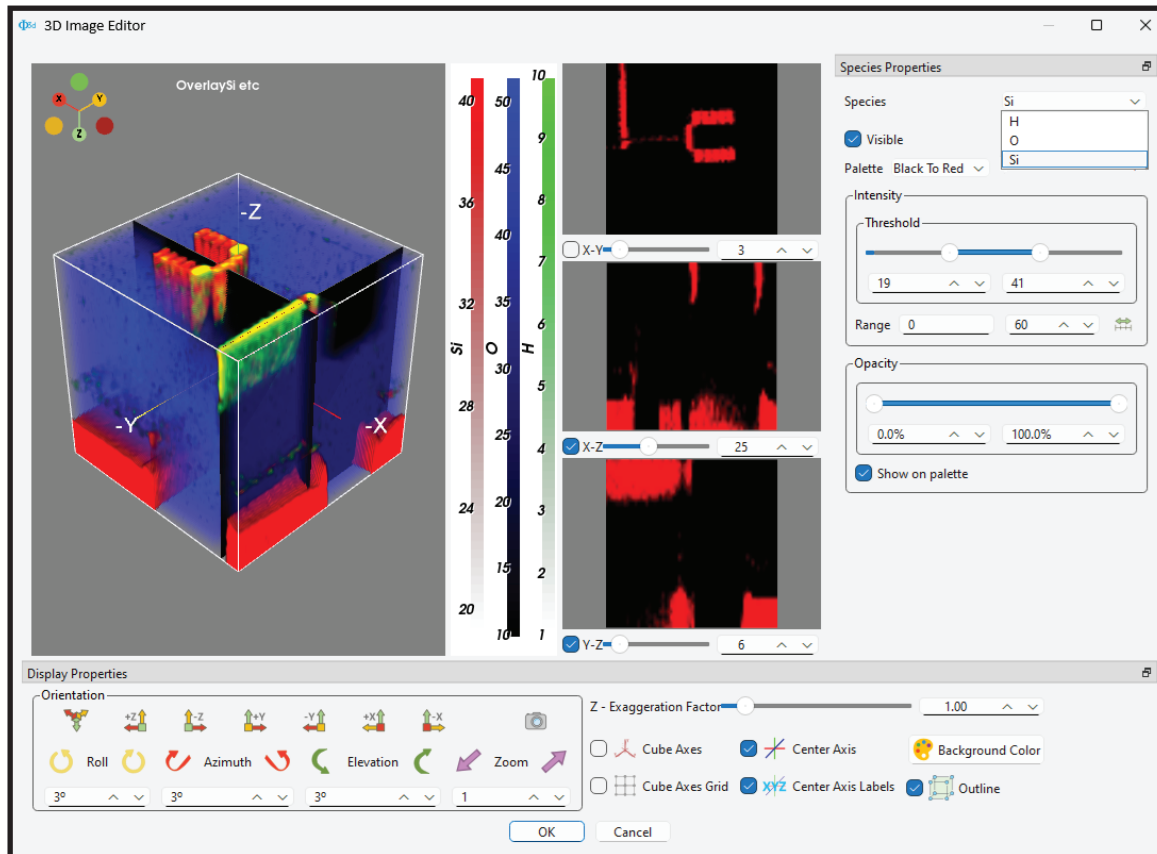
Other developments:

- Windows 11 support
- Region of interest (ROI) feature improvements
- Review Window Redesign and Enhancements
- Many UI improvements

Machine learning supported Mass Calibration



Redeveloped 3-D Imaging



SIMetric Software Package

