

# VersaProbe I to VersaProbe II UPGRADE



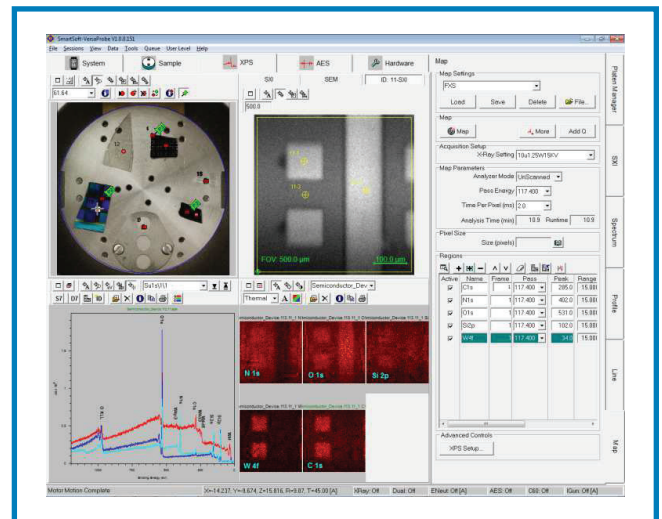
**PHYSICAL  
ELECTRONICS**  
A DIVISION OF ULVAC-PHI



The *VersaProbe II* has been a large success much like the first generation *VersaProbe I*. In response to many *VersaProbe I* customers, we can offer an upgrade package. This package removes a large part of the electronics to allow the implementation of many software and hardware features of the *VersaProbe II*. Listed are the key features and changes gained from the upgrade:

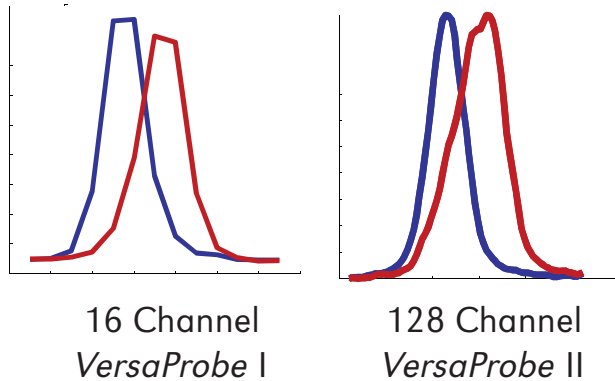
## SmartSoft

- Greatly Improved User Interface
- More automated transfer process
- Organized workflow
- Integrated platen management
- Intuitive queuing for improved automation & throughput
- Stored recipes and analysis locations improved point & click navigation on SXI image
- Point & Click on optical image
- Real-time system status during acquisitions
- Enhanced service tools
- Software controlled analyzer calibration
- Multilevel system status logging
- Password protection for critical system parameters



## Performance Changes

- 128 Channel detection
  - Provides excellent chemical state mapping capability
  - Improves depth profiling capabilities
- New Electronics
  - Improves system/electronics overhead to increase speed
  - ~5x improvement in switching ion gun settings resulting in minutes of time savings during depth profiling
  - Services diagnostic are markedly improved with electronics/software system status and error reporting
  - USB electronics design



In one shot, without scanning the analyzer, 128 channels of data allows the user to more easily recognize chemical information. This capability improves data quality and can be achieved in a fraction of the time.

## Update Details

- *VersaProbe I* card racks removed and replaced with *VersaProbe II* electronics
- New Intro Camera and necessary brackets installed
- New State of the art Windows 10 computer
- Latest version of SmartSoft
- Latest version of MultiPak
- CE compliant
- Sample holders will not change
- 95 mm Stage is not Supported
  - Stage spacer will be removed from 95mm stage
  - Maximum sample holder size is 60mm
- Image Registration Compatible
- Resets the age of the system with reduced cost service contract



New Intro Camera