

WinCadenceN Version 1.19 - Release Notes

1/16/2017

1	Version 1.19	1
1.1	New Features in This Version	1
1.1.1	Support Configuration with Orsay LMIG with PHI LMIG Controller	1
1.2	Corrected Issues from Previous Versions	1
1.3	Operation Notes	1
1.3.1	Support Configuration with Orsay LMIG with PHI LMIG Controller	1

1 Version 1.19

1.1 New Features in This Version

1.1.1 Support Configuration with Orsay LMIG with PHI LMIG Controller

Support was added for the configuration of an Orsay LMIG being controlled by a PHI LMIG controller.

1.2 Corrected Issues from Previous Versions

- None

1.3 Operation Notes

1.3.1 Support Configuration with Orsay LMIG with PHI LMIG Controller

To configure the system to use the Orsay LMIG with the PHI LMIG controller, use the configuration tool to set the Device type for port 1 to 'Orsay/PHI LMIG'.

The screenshot shows a dialog box titled "E-Mail Notification" with a close button in the top right corner. The dialog is divided into two tabs: "Addresses" and "Properties".

Under the "Addresses" tab, there is an "E-Mail Setup" section with the following fields:

- SMTP Host: 10.20.30.40
- SMTP Port: 25
- Sender Name: nanoTOF System
- Sender Address: nanoTOF@YourCompany.com

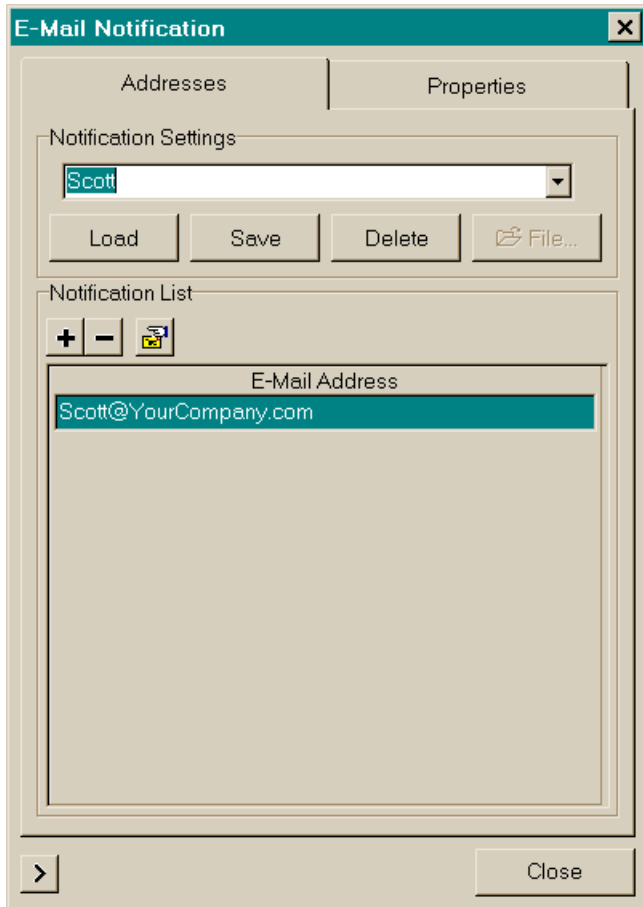
Under the "Properties" tab, there is a "Test Message" section with the following fields:

- Test Subject: Notification Test
- Test Message: This is a test of the SmartSoft not

Below the "Test Message" field is a button labeled "Send E-Mail" with an envelope icon. At the bottom of the dialog, there is a right arrow button and a "Close" button.

To bring up the Email Notification menu, select Email Notification from the System pulldown menu.

- SMTP Host
This is the IP address of the server that forwards email at your site. Your IT department should be able to provide you with this information.
- SMTP Port
This is the TCP port number used to communicate with the email server at your site. This is almost always set to 25, but your IT department will know for sure.
- Sender Name
This is the text to be shown on email messages as the name of the sender.
- Sender Address
This is the text to be shown on email messages as the email address of the sender.
- Test Subject
This is the text on the Subject line on test messages.
- Test Message
This is the text of the message on test messages.



To set up a list of email addresses, you need to add the email addresses to the list and then save the list as a Notification settings item.

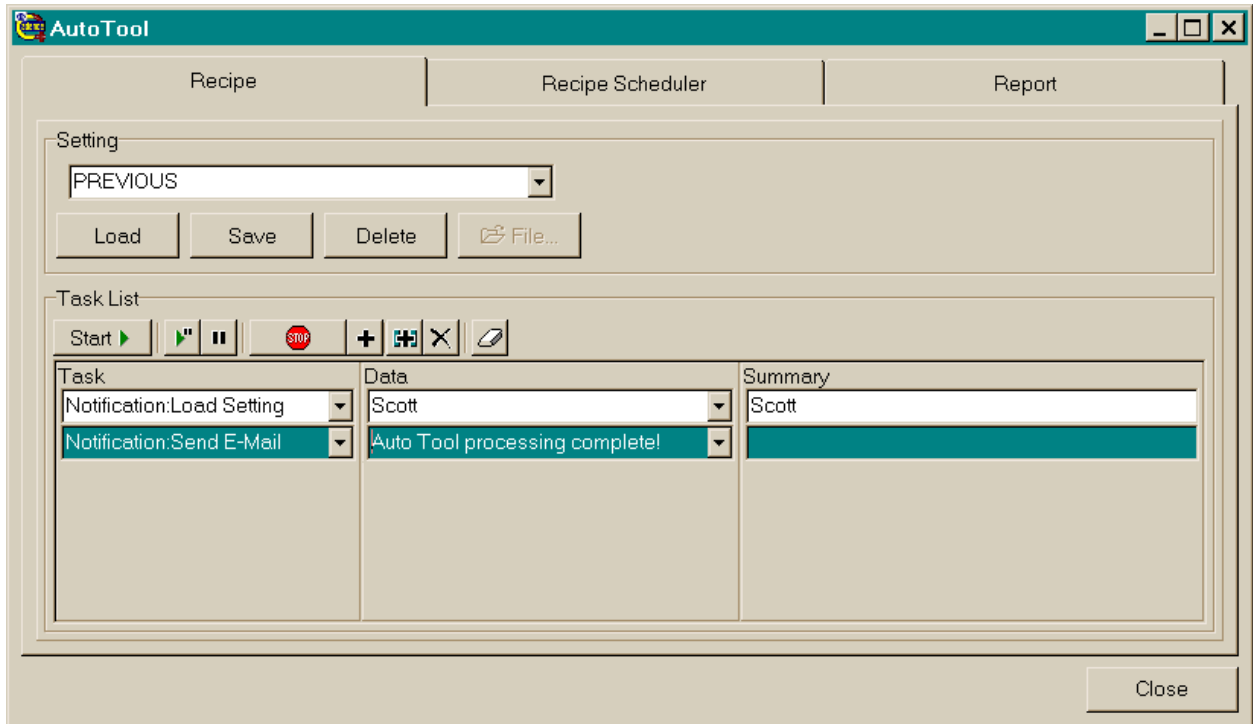
- Select the + button. This will open up a new line on the E-Mail Address list.
- Enter an email address on the new line.
- Repeat, if you want to send notifications to multiple email addresses.
- Enter a name on the Notification Settings combo box and select Save.

The image shows a software dialog box titled "Options" with a close button (X) in the top right corner. The dialog is organized into several sections:

- Options:** Includes dropdown menus for "Detector Scan Mode" (Imaging Mode 32x32), "Detector Scan - Spectral" (Imaging Mode 32x32), "Detector Scan - Profiles" (Fast Mode), "Detector Scan - Mosaic" (Imaging Mode 32x32), "Time Per Channel (pSec)" (128), and "Image Size (pixels)" (256).
- Energy Slit:** Includes a dropdown for "Slit" (240 eV (out)) and a text input for "Slit Fine Tuning (mm)" (0.000).
- Regions of Interest:** Includes a checkbox for "Acquire From ROI(s)" (unchecked) and an "Edit ROIs ..." button.
- File Management:** Includes a text input for "Max Raw File Size (MB)" (2000).
- Email Notification:** This section is highlighted with a red rectangle. It contains a checkbox for "Email Notification Enabled" which is checked, and a small button with three dots to its right.
- Phased Profile Settle Times:** Includes text inputs for "Analyze Phase (s)" (1.0), "Sputter Phase (s)" (1.0), and "Charge Comp Phase (s)" (1.0).
- Mosaic Options:** Includes a text input for "Raster Overscan (um)" (0.0).
- Dose:** Includes text inputs for "Pulse Width (nSec)" (3.0) and "DC Current (nA)" (1.00000).
- Available Time Usage:** Includes text inputs for "Charge Comp Time (%)" (100.0) and "Sputter Pulse Time (%)" (100.0).
- Sequencer (Service Level):** Includes a checkbox for "Override Sequencer Recalculation" (unchecked).

A "Close" button is located at the bottom right of the dialog box.

To send email notification when an acquisition completes, check the box on the Acquisition Setup Properties view. Note that email notification will not be sent when an acquisition is stopped or aborted by the operator.



To send email notification as part of an Auto Tool script, you can do the following.

- **Load Notification Settings**

This option allows you to specify the list of email addresses to be used. If you don't add this entry, the notification emails will be sent to the list specified in the currently loaded settings.

- **Send Email Notification**

This option allows you to send email notification. The text entered in the Data field will be shown as both the subject and message text of the email message.